



**BOARD OF DIRECTORS**

**METROPOLITAN ATLANTA RAPID TRANSIT AUTHORITY**

**PLANNING AND CAPITAL PROGRAMS COMMITTEE**

**THURSDAY, OCTOBER 27, 2022**

**ATLANTA, GEORGIA**

**MEETING MINUTES**

**1. CALL TO ORDER AND ROLL CALL**

Chair Al Pond called the meeting to order at 9:31 P.M.

**Board Members**

**Present:**

Al Pond  
Freda Hardage  
Jim Durrett  
Kathryn Powers  
Roberta Abdul-Salaam  
Roderick Frierson  
Stacy Blakley  
Reginald Snyder  
William Floyd  
Rita Scott

**Board Members**

**Absent:**

Robert Ashe III  
Russell McMurry<sup>1</sup>  
Thomas Worthy  
Heather Aquino<sup>1</sup>  
Rod Mullice

**Staff Members Present:**

Collie Greenwood  
Josh Rowan  
Raj Srinath  
Melissa Mullinax  
Rhonda Allen  
George Wright  
Peter Andrews

<sup>1</sup>Russell McMurry is Commissioner of the Georgia Department of Transportation (GDOT) and Heather Aquino is the Interim Executive Director of the Georgia Regional Transportation Authority (GRTA). Per the MARTA Act, both are non-voting members of the Board of Directors.

**Also in Attendance:** Justice Leah Ward Sears, Paula Nash, Jacqueline Holland, Robin Boyd, Kenya Hammond, Tyrene Huff, Phyllis Bryant and Nicci Golden.

**2. APPROVAL OF THE MINUTES**

**Approval of the September 29, 2022, Planning and Capital Programs Committee minutes**

Approval of the September 29, 2022, Planning and Capital Programs Committee minutes. On a motion by Board Member Durrett, seconded by Board Member Hardage, the motion passed by a vote of 10 to 0 with 10 members present.

**3. BRIEFING**

**South Fulton County Capital Projects Briefing**

Josh Rowan, Deputy General Manager, Capital Programs, Expansion and Innovation, presented an overview of South Fulton County capital projects.

**4. RESOLUTIONS**

**RESOLUTION AUTHORIZING THE AWARD OF A CONTRACT FOR STRUCTURAL INSPECTION ENGINEERING SERVICES, AE50149**

Approval of the Resolution Authorizing the Award of a Contract for Structural Inspection Engineering Services, AE50149 On a motion by Board Member Durrett, seconded by Board Member Snyder, the resolution passed by a vote of 10 to 0 with 10 members present.

**Resolution Authorizing the Disposal of Non-Exclusive Permanent Easements to the Atlanta Development Authority d/b/a Invest Atlanta by and through its designated special agent, Atlanta BeltLine Inc, in the amount of \$198,500.00 for construction of Segment 4 of the Westside Trail, Fulton County, Atlanta GA**

Approval of the Resolution Authorizing the Disposal of Non-Exclusive Permanent Easements to the Atlanta Development Authority d/b/a Invest Atlanta by and through its designated special agent, Atlanta BeltLine Inc, in the amount of \$198,500.00 for construction of Segment 4 of the Westside Trail, Fulton County, Atlanta GA. On a motion by Board Member Durrett, seconded by Board Member Hardage, the resolution passed by a vote of 10 to 0 with 10 members present.

**5. OTHER MATTERS**

None

**6. ADJOURNMENT**

The Committee meeting adjourned at 10:02 P.M.

Respectfully submitted,



Tyrene L. Huff  
Assistant Secretary to the Board

YouTube link: <https://youtu.be/-8StfDonowU>



# South Fulton County Capital Projects Briefing

---

Planning & Capital Programs Committee

October 27, 2022

# Agenda

---

1. Current Stops & Services
2. Bus Network Redesign
3. Expansion Program





# Current Stops & Services

---



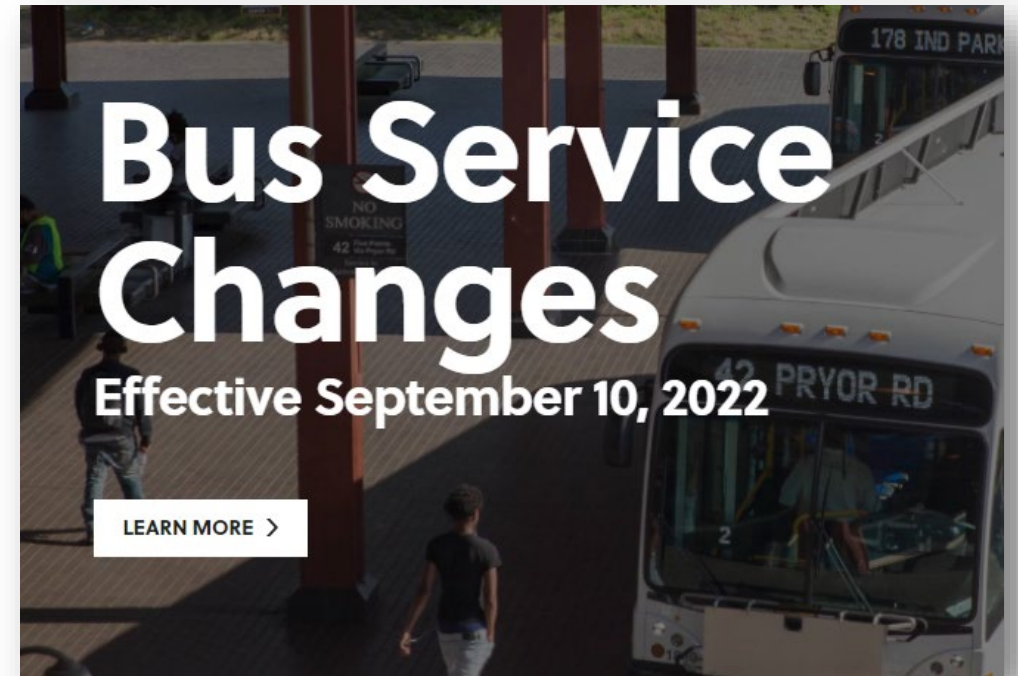
## September 2022 Service Changes

Service Changes or “mark-ups,” usually occur three times a year and are communicated to the public through:

- Printed material at stations and on buses
- Newspapers
- MARTA’s website and social platforms
- NPU meetings when a community is affected

September 10, 2022, mark-up in South Fulton included:

- Adding back service to nine routes where it had been reduced due to staffing shortages
- Seven additional routes had schedule revised to better match actual travel times
- Restoring service on Route 71 where it had been truncated because of a bridge closure



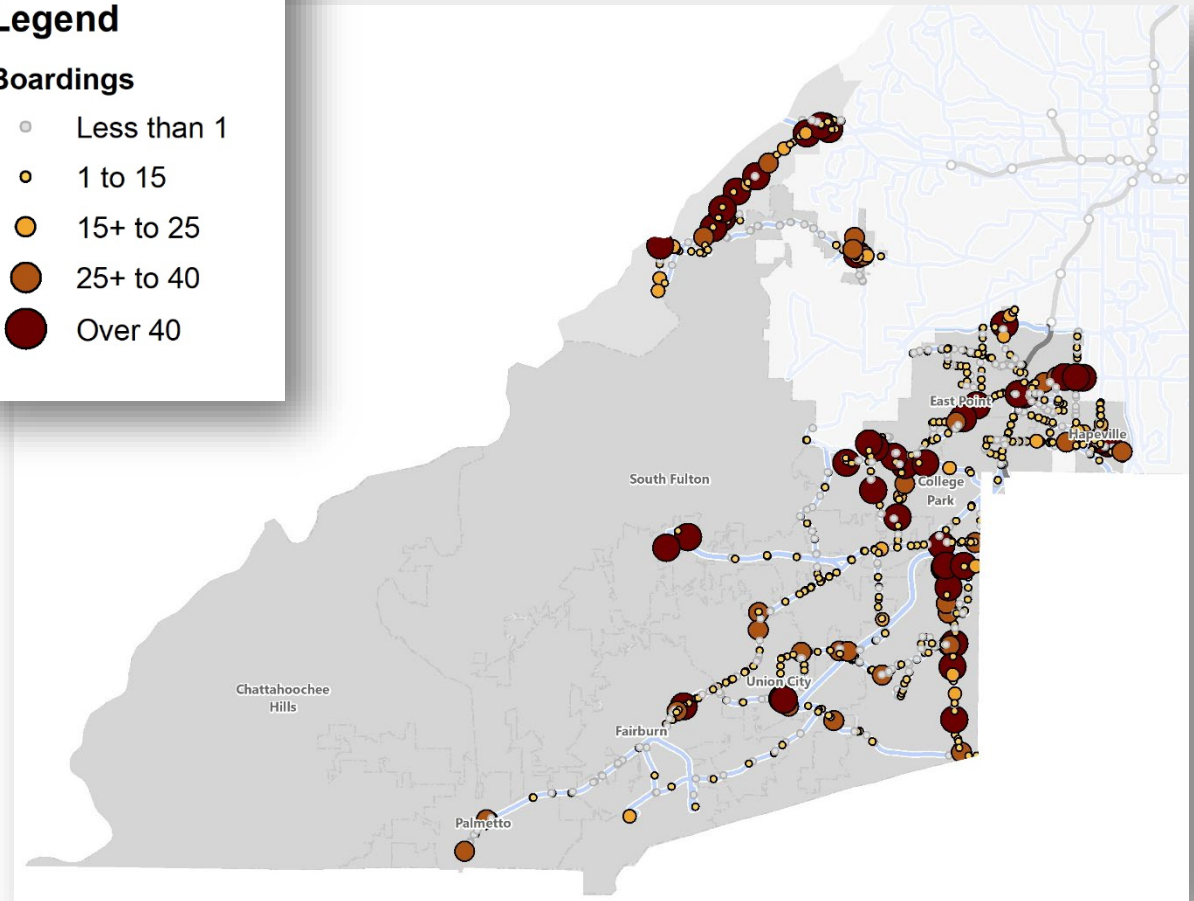
## Bus Stops & Amenities

- **985** bus stops in South Fulton
- **195** stops with amenities (as of 9/12/22)
  - 162 shelters
  - 32 benches
  - 1 Simme-Seat
- Average daily bus ridership (Dec '21-Apr'22)
  - **7,556** total boardings
  - **8,150** total alightings
  - **71%** of boardings take place at stops with amenities

### Legend

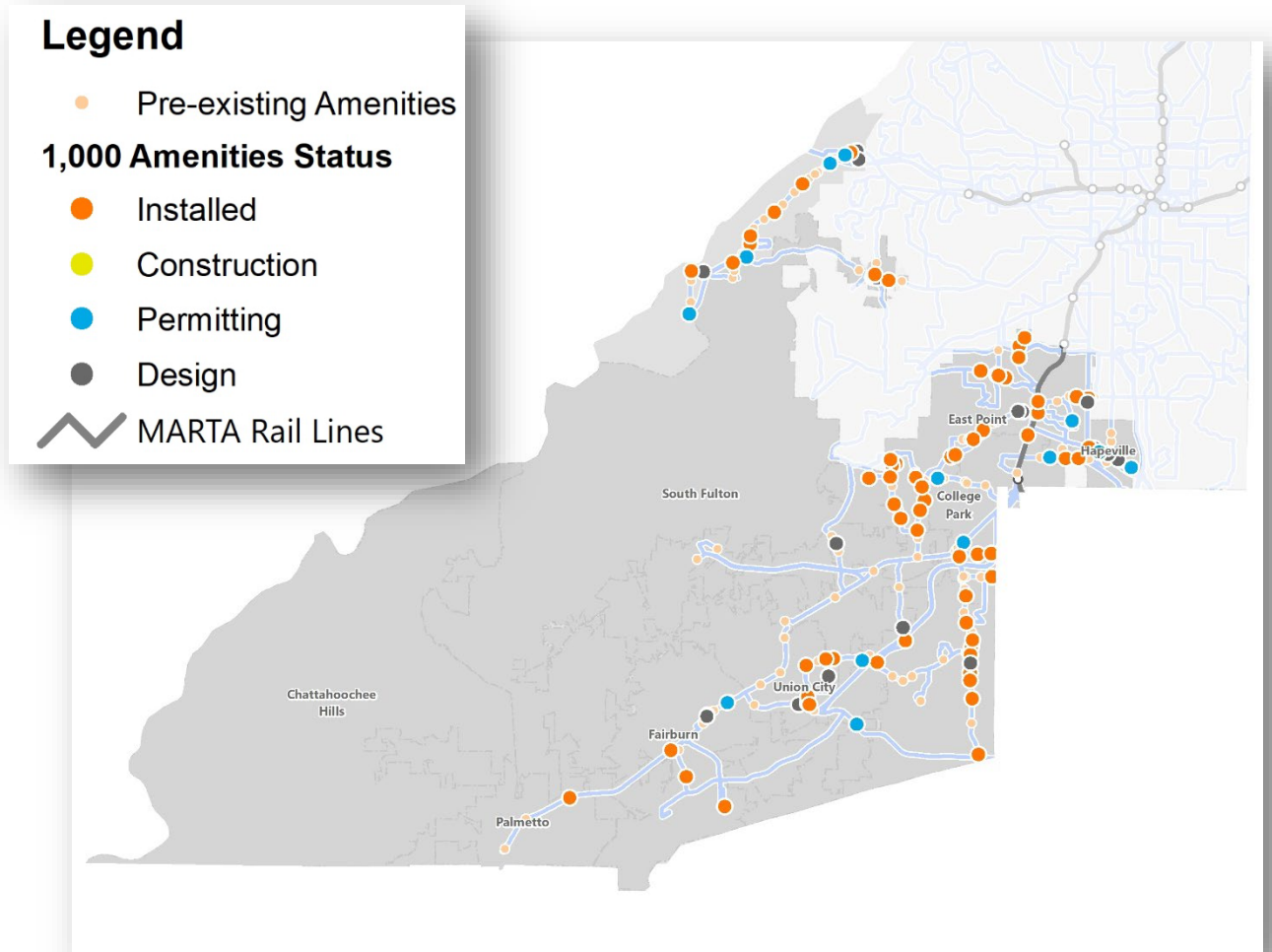
#### Boardings

- Less than 1
- 1 to 15
- 15+ to 25
- 25+ to 40
- Over 40



# 1,000 Amenities Program

- Five-year program started in FY2020
- Fifty (50) amenities per year in Fulton County
- Program Status for South Fulton County (as of 9/12)
  - 69 sites installed
  - 13 sites in permitting
  - 17 sites in design
- \$1.5M invested to date for amenities in South Fulton County through the program.





# 1,000 Amenities Program- Example

190034 – Roosevelt Hwy & Harbor Lakes Pkwy



  **13** Weekday Boardings

**Serves:**  
Evergreen Park  
Apartments

**Routes:**  
180 - Roosevelt Hwy





# Bus Network Redesign

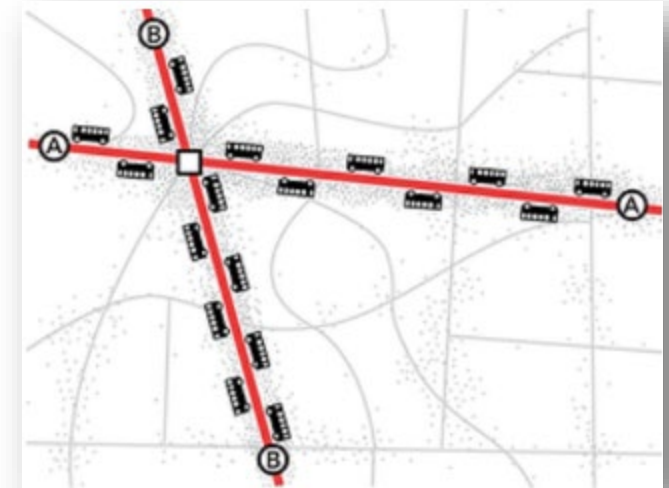
---



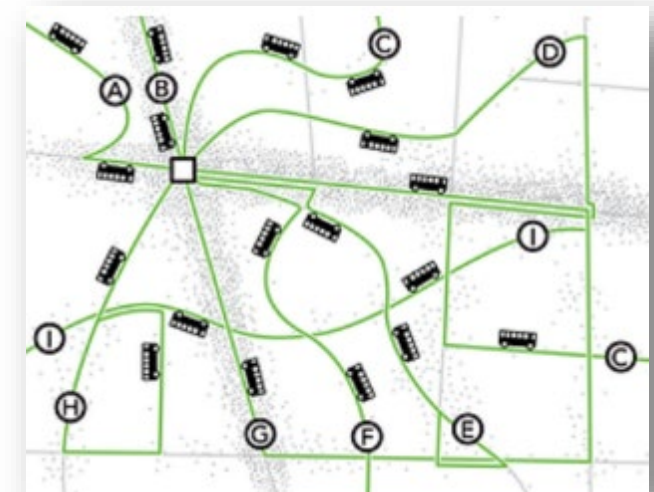
# Bus Network Redesign

- Redraws the bus network “from scratch”
- Budget neutral
- Two concepts have been developed that emphasize different goals
  - The **ridership** concept network emphasizes going to the places with the highest ridership potential more frequently
  - The **coverage** concept network emphasizes going more places with less frequency

## RIDERSHIP CONCEPT - More Frequency



## COVERAGE CONCEPT - More Places





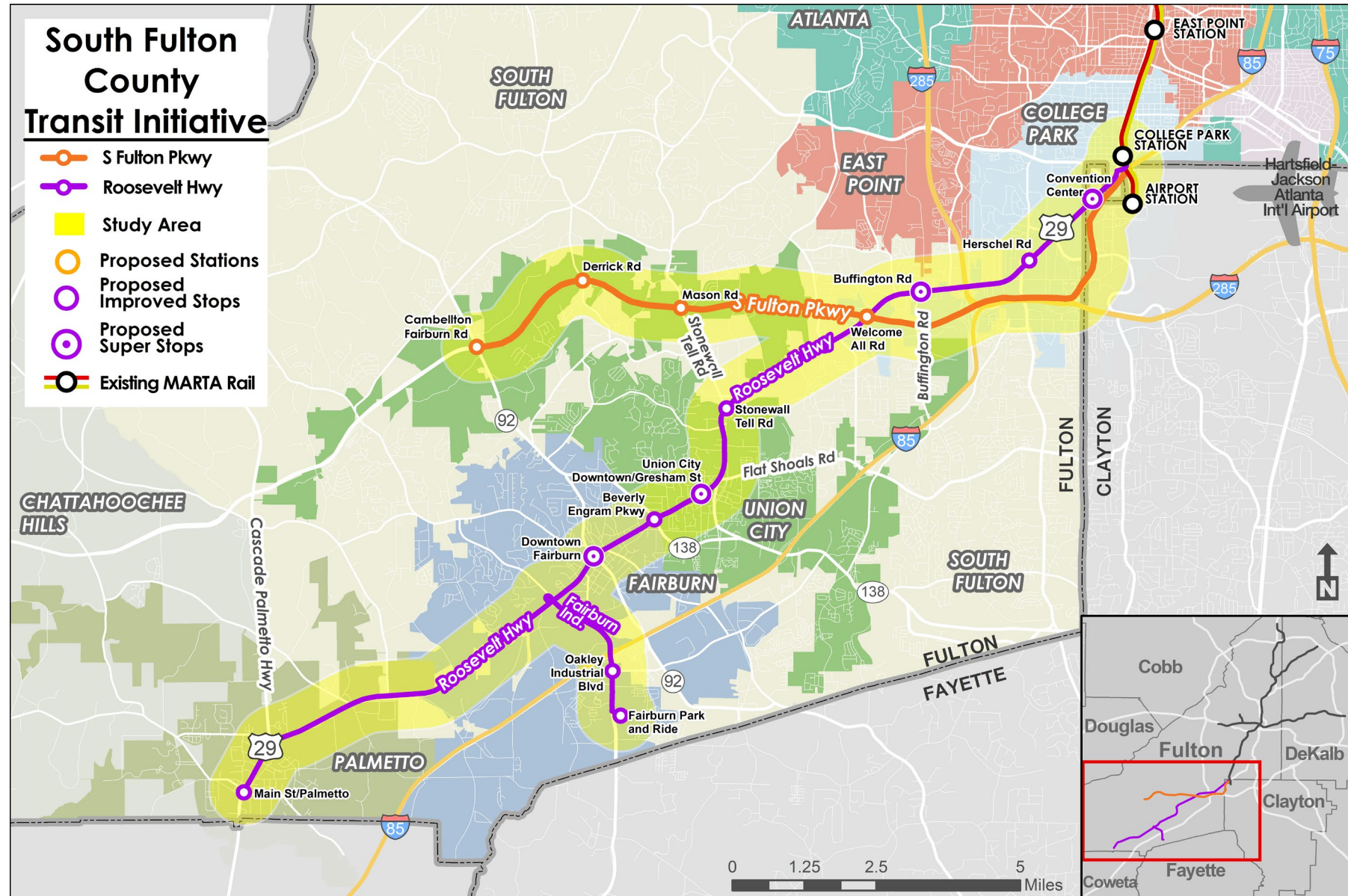
# Expansion Program

---

# Project Focus

South Fulton Parkway  
High-Capacity Transit  
Feasibility

Roosevelt Highway (US 29)  
Transit Enhancements for  
Existing Service



# Transit Mode Definitions

	Local Bus	Arterial Rapid Transit (ART)	Bus Rapid Transit (BRT)
Stop/Station Spacing	800-1,200 feet	¼ to ½ mile	Every ½ mile or more
Typical Frequency	30-60 minutes	15 minutes or better	10 minutes or better
Span	16-21 hours of service	20-21 hours of service	20-21 hours of service
Capacity	50-100 riders per hour	Up to 250 riders per hour	250-500 riders per hour
Cost to Implement	\$	\$\$	\$\$-\$\$\$
Planning & Construction Time	0.5 -1 year	3-5 years	5-7 years
Stop/Station Amenities	Signage; shelter and benches at some stops	Local amenities, plus: ADA-accessible station shelters, wayfinding, real-time information	ART amenities, plus: raised platforms, off-board fare payment, first/last mile connections

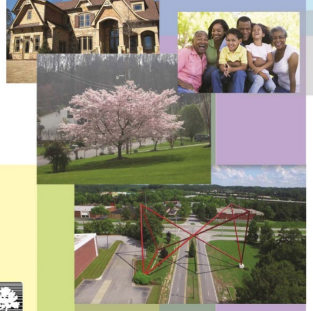
# Previous planning actions and efforts

prior to 2018

Local Government Handbook  
for Transit Along South Fulton Parkway

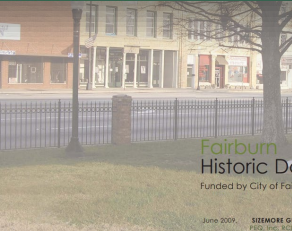


2035 FULTON COUNTY  
COMPREHENSIVE PLAN  
2016-2035



OCTOBER 2016

South Fulton Parkway  
Access Management Study  
Public Open House



Fairburn  
Historic Downtown LCI study  
Funded by City of Fairburn and Atlanta Regional Commission

June 2009 SIZEMORE GROUP in collaboration with  
PEG, INC. KICED and Ford & Company

2018

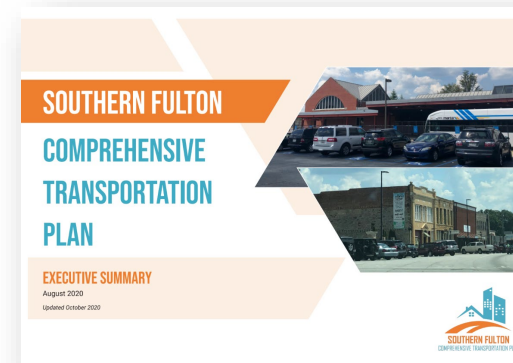


FULTON COUNTY  
TRANSIT MASTER PLAN

Alpharetta  
Chastainhoochee Hills  
College Park  
East Point  
Fairburn  
Hapeville  
Johns Creek  
Milton  
Mountain Park  
Palmhurst  
Roswell  
Sandy Springs  
South Fulton  
Union City

Plan sponsored by Fulton County Government, Atlanta Regional Commission, and the 14 participating cities

2020



SOUTHERN FULTON  
COMPREHENSIVE  
TRANSPORTATION  
PLAN

EXECUTIVE SUMMARY

August 2020  
Updated October 2020



2020



15<sup>th</sup>  
Amendment  
Passed

# Current Schedule

We are Here

## South Fulton Parkway High-Capacity Transit Feasibility

**Assessment Phase**  
Focused on evaluating the corridor's current condition, developing transit alternatives to address transit demand, and identifying the top options  
**(2021-2023)**

**Concept & Design Phase**  
Focused on refining the concept for the selected transit option, based on the **Assessment Phase**  
**(2023-2024)**

**Action Plan Phase**  
Focused on finalizing the action plan and next steps to execute the designed system, based on **Concept & Design Phase**  
**(2025)**

## Roosevelt Highway Transit Enhancements for Existing Service

**Assessment Phase**  
Focused on evaluating the corridor's current condition, developing transit alternatives to address transit demand, and identifying the top options  
**(2021-2023)**

**Concept & Design Phase**  
Focused on refining the concept for the selected transit improvement sites, based on the **Assessment Phase**  
**(2023-2024)**

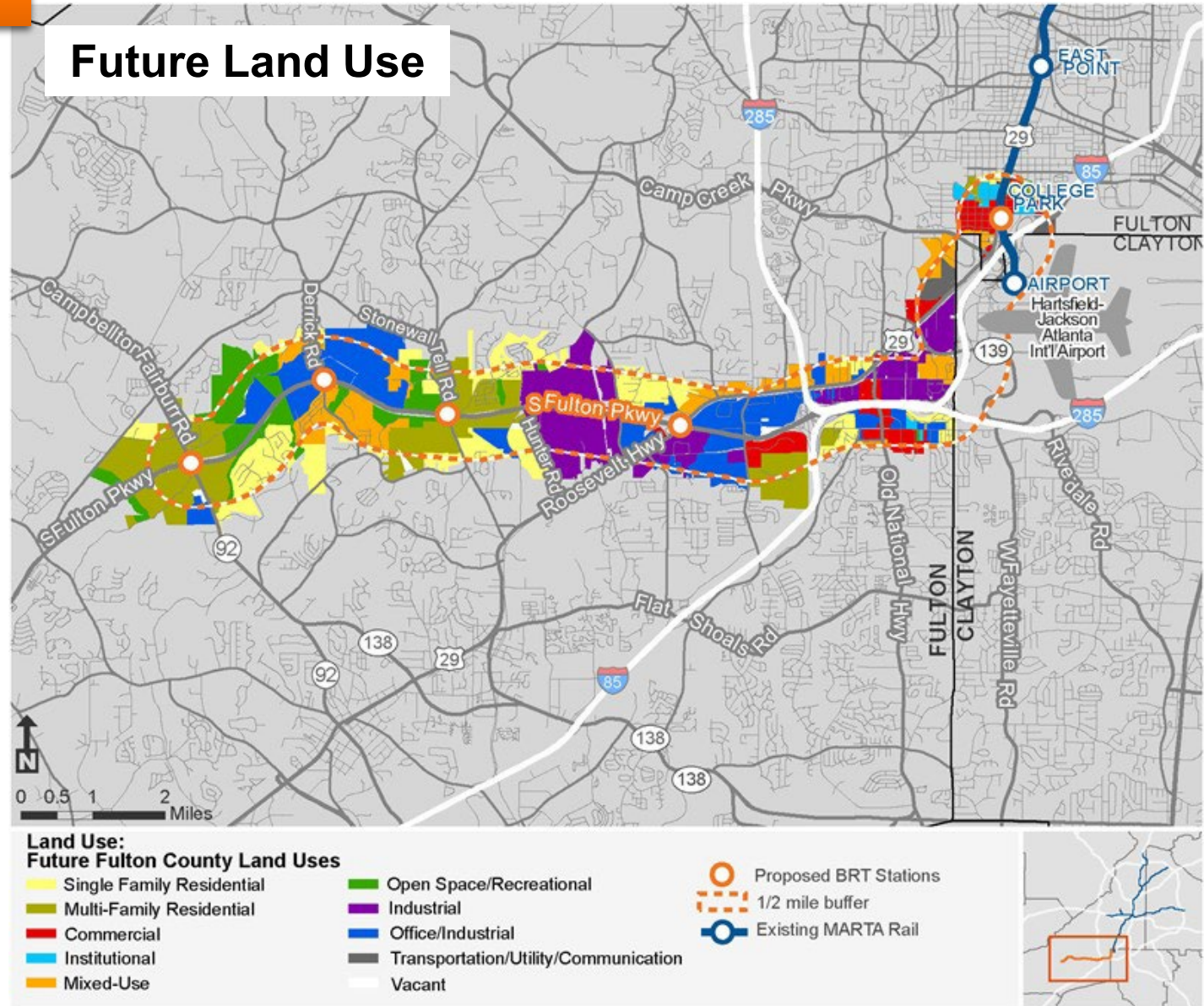
**Start of Construction Phase**  
**(2025)**



# Existing Conditions Analysis

## South Fulton Parkway Key Characteristics

- Ample roadway capacity and growing freight activity
- Large amount of developable land
- Pedestrian and bike safety concerns
- Potential to increase development density, intensity, and mix
- Existing MARTA service area

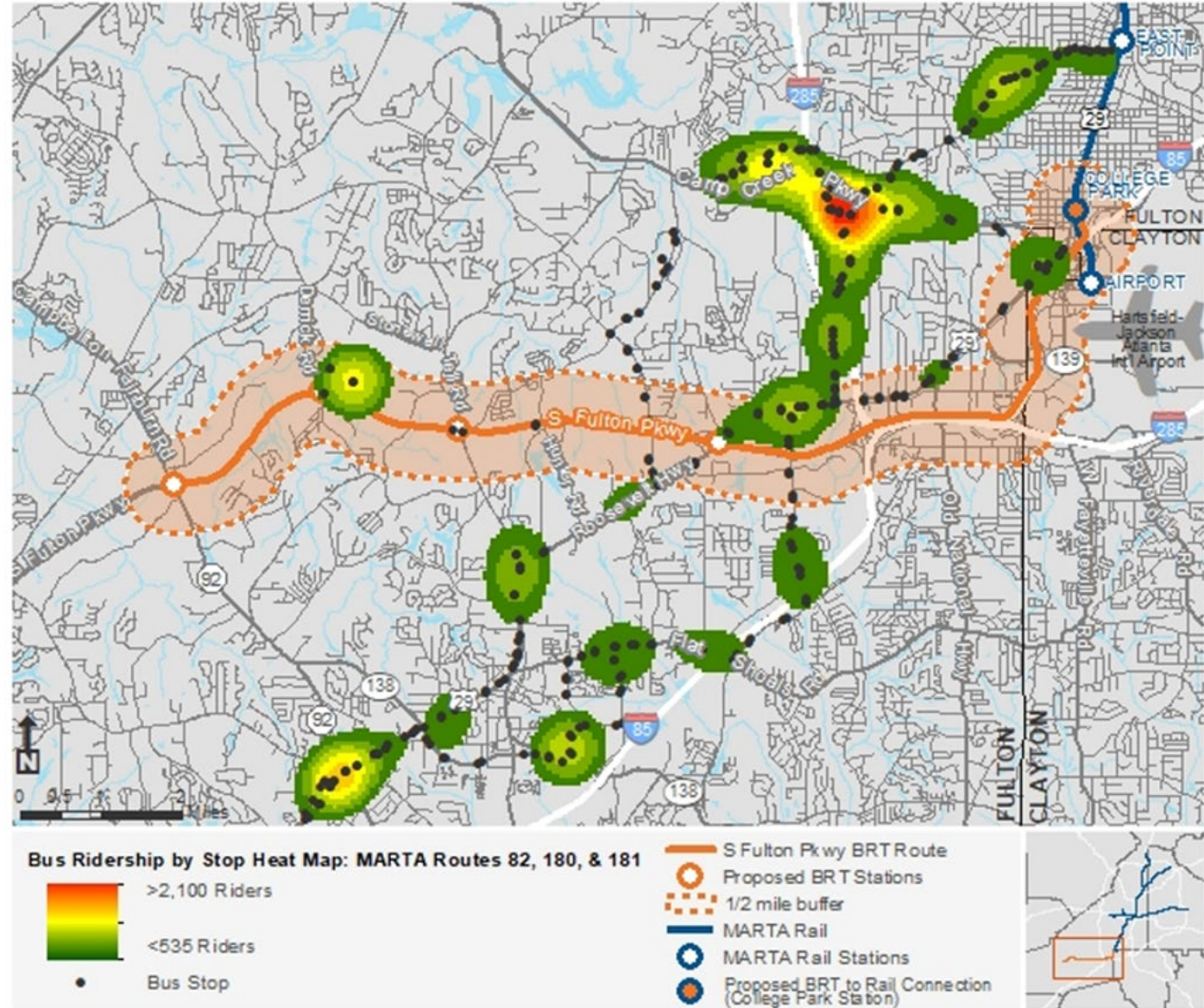


# Existing Conditions Analysis

## South Fulton Parkway Current Transit Service

### Route 82

- Campbellton-Fairburn Road to College Park Station
- 2,490 daily ridership (2019)
- 78.84% on-time performance



# Existing Conditions Analysis

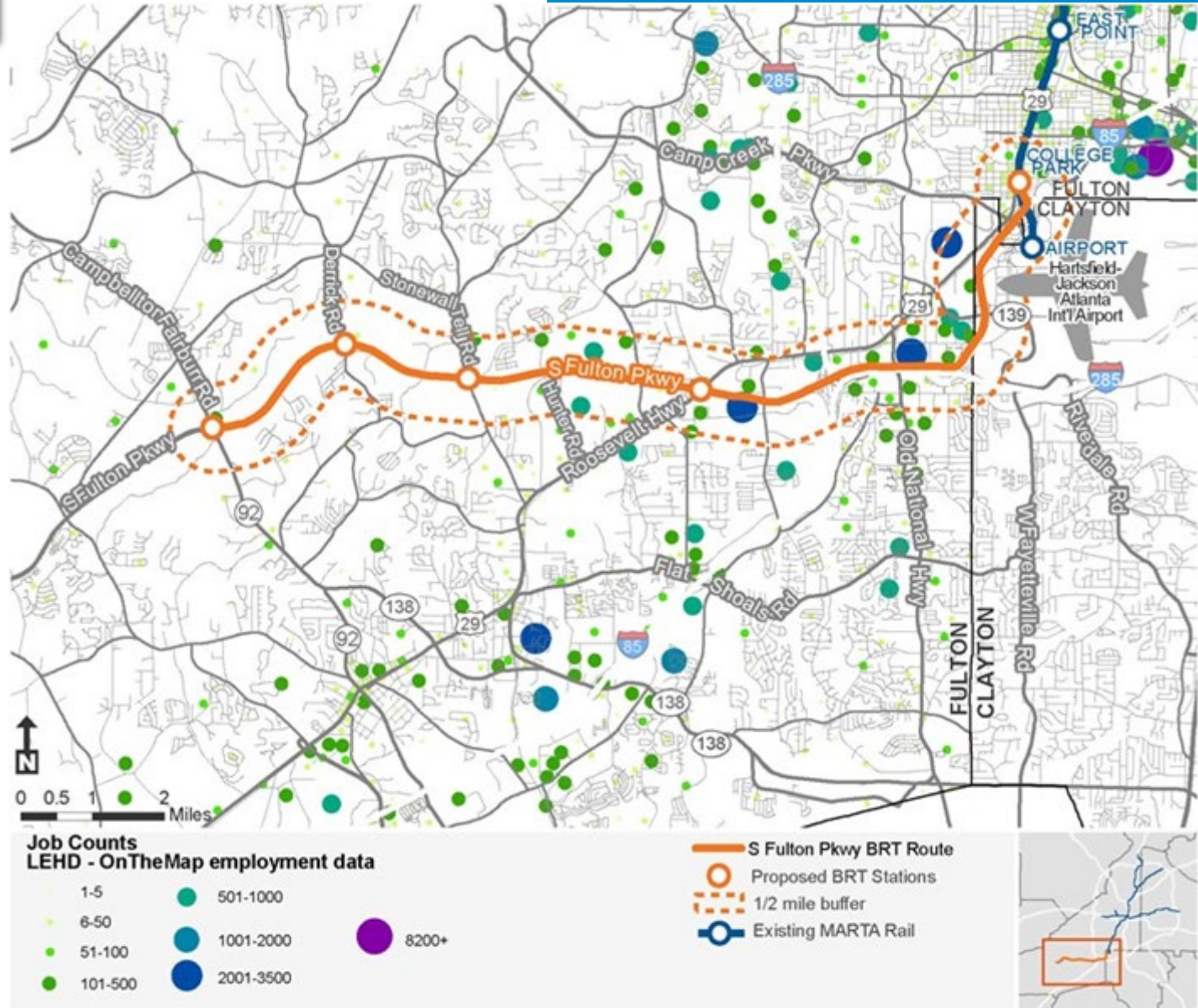
## South Fulton Parkway Employment Overview

Major Employers headquartered nearest the study area include:

- Chick-Fil-A,
- National Credit Systems, Inc., and
- Halpern's Purveyors of Steak & Seafood

Major employment centers along the corridor include:

- Del Monte Foods,
- Kellogg,
- GE Energy Parts Inc., and
- Walmart Fulfilment Center



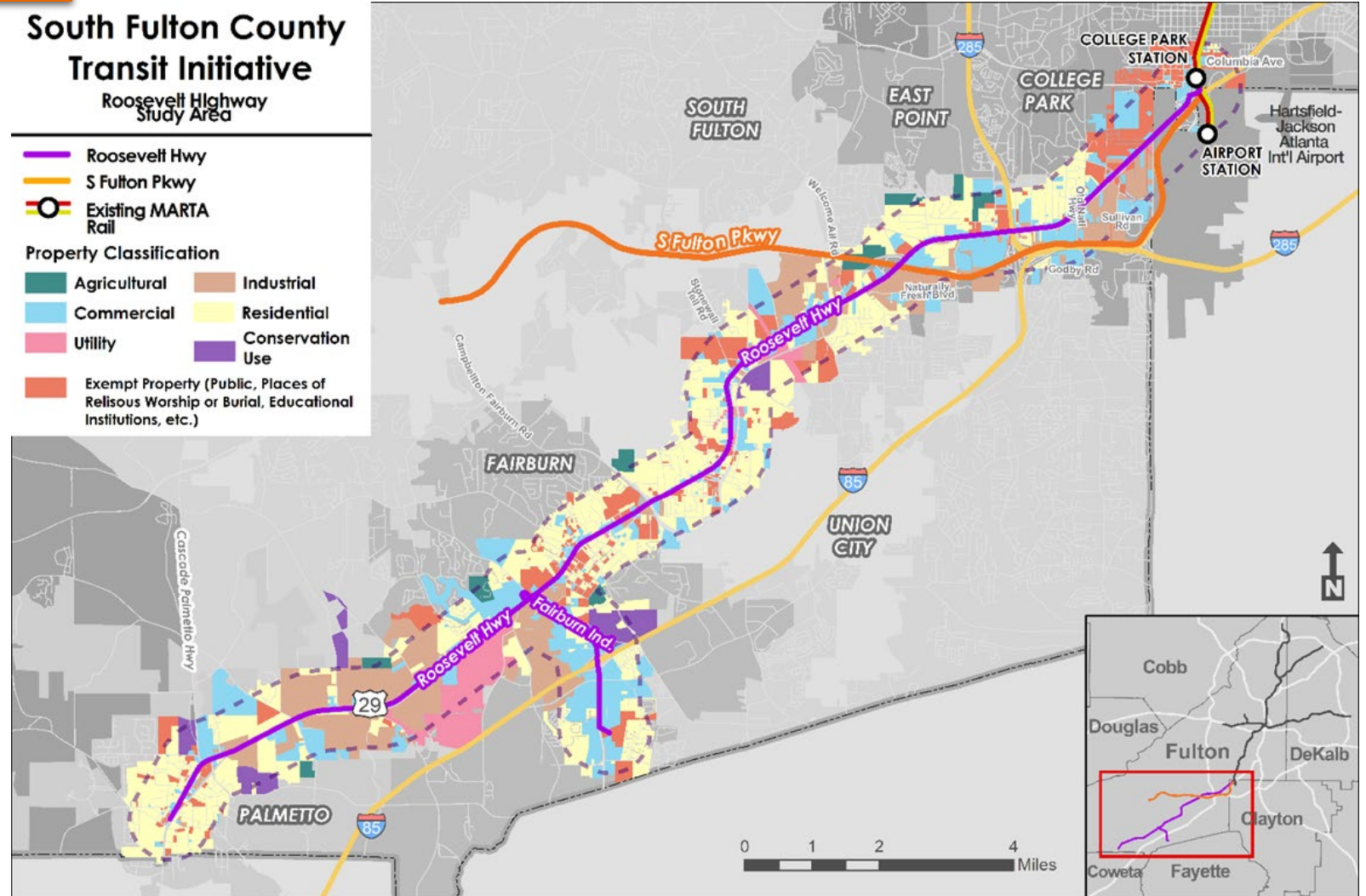
# Existing Conditions Analysis

## Roosevelt Highway Key Characteristics

- Low population & employment density
- Transit supportive land use policies and zoning codes
- Gaps in pedestrian and bike facilities
- Upward and clustered trend in crashes
- Potential to increase development density, intensity, and mix

**South Fulton County Transit Initiative**  
Roosevelt Highway Study Area

	Roosevelt Hwy		
	S Fulton Pkwy		
	Existing MARTA Rail		
<b>Property Classification</b>			
	Agricultural		Industrial
	Commercial		Residential
	Utility		Conservation Use
	Exempt Property (Public, Places of Religious Worship or Burial, Educational Institutions, etc.)		

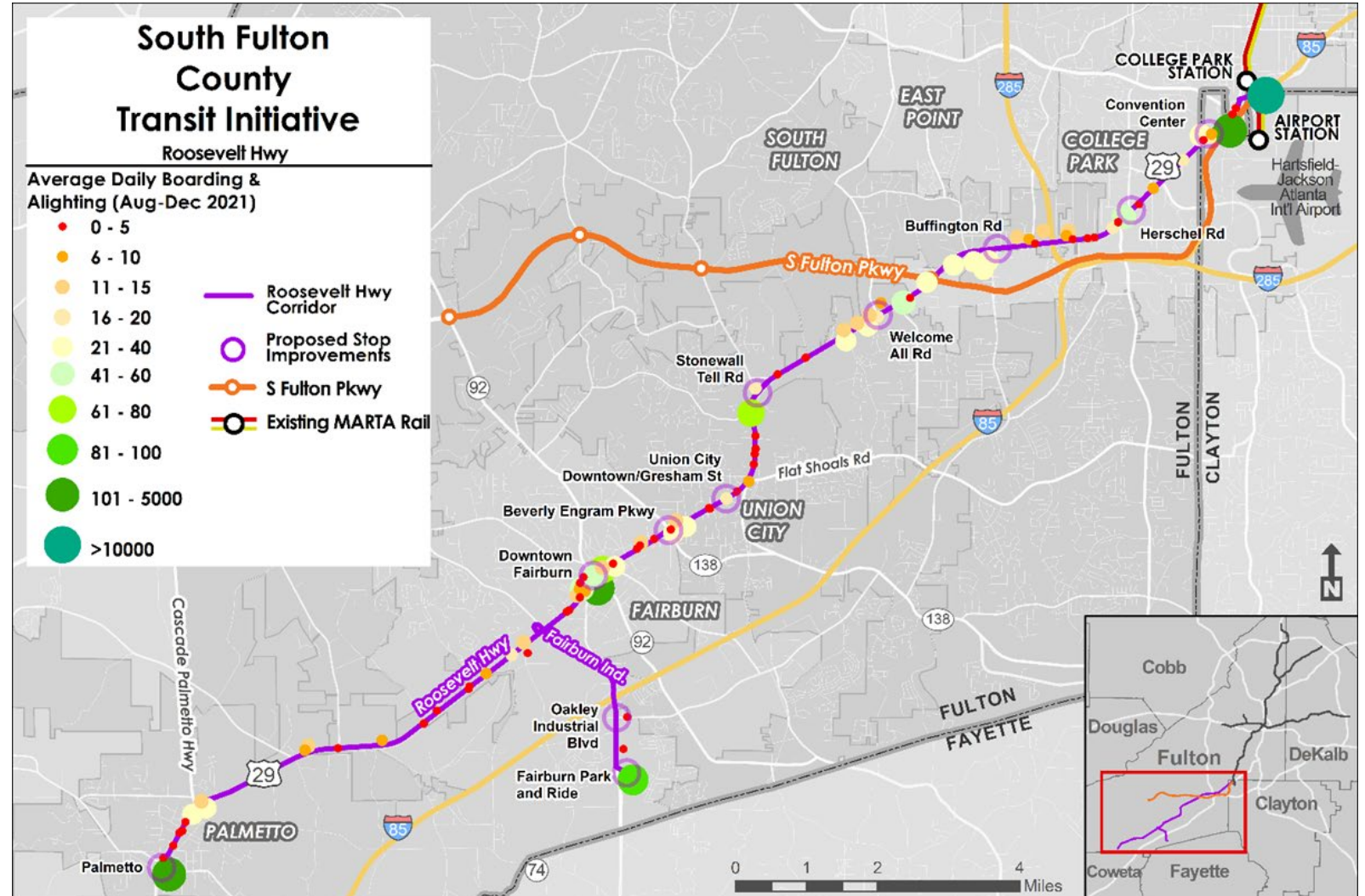


# Latest Activity

## Roosevelt Highway Current Transit Service

### Route 180

- Palmetto to College Park Station
- 2,116 daily ridership (2019)
- 83.65% on-time performance



# Existing Conditions Analysis

## Roosevelt Highway Evaluation at Each Stop

For each **proposed** station or stop area the project evaluates:

- ✓ Current Infrastructure
- ✓ Utilities
- ✓ Parking
- ✓ Lighting
- ✓ Land use and zoning
- ✓ Current MARTA ridership



A. Gresham Street; B. Hershel Road; C. Buffington Road

## Existing Conditions Analysis

### Roosevelt Highway Sites Under Consideration

#### Improved Stops:

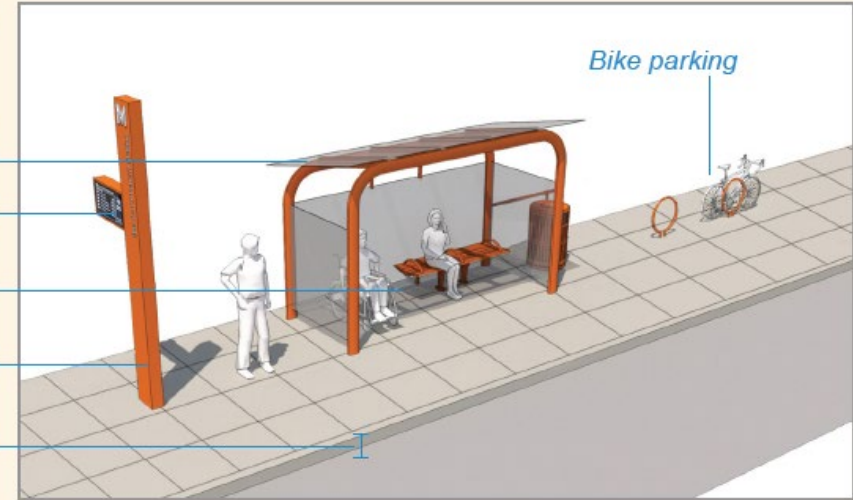
- ✓ Passenger amenities  
(shelters, seating, bike parking, etc.)
- ✓ Vertical marker for bus operations

#### Super Stops:

- ✓ [same as 'Improved Stop']
- ✓ Enhanced amenities  
(larger shelters, ticket-vending machine, real-time arrival information, etc.)
- ✓ Level boarding area
- ✓ ADA-accessible ramp
- ✓ Tactile warning strips

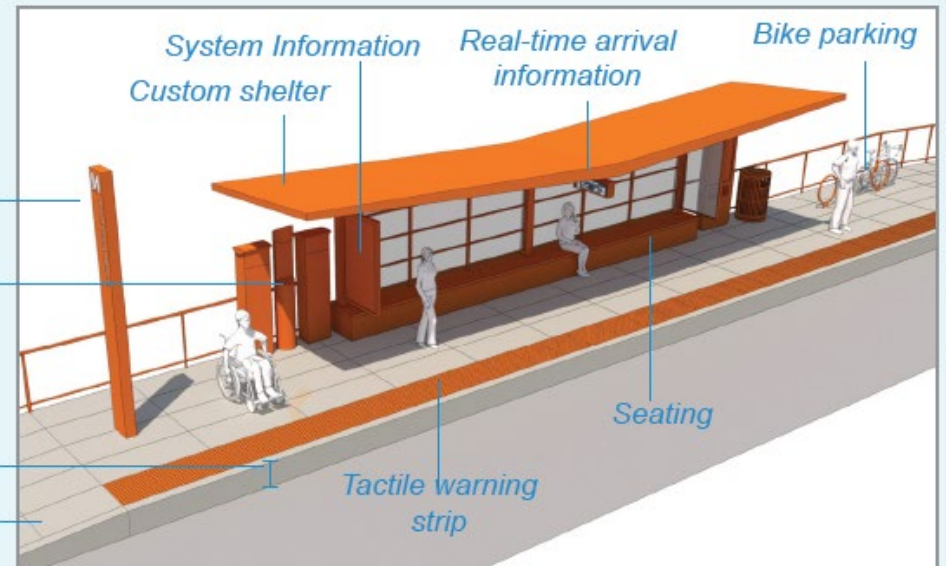
#### Improved Stop

- Modular shelter
- Real-time arrival information
- Seating
- Vertical marker
- 6-inch Curb



#### Super Stop

- Vertical marker
- Ticket vending machine
- Level Boarding
- Accessibility ramp



## Latest Activity

# Major Engagement Takeaways from the Spring/Summer 2022 Engagement Phase

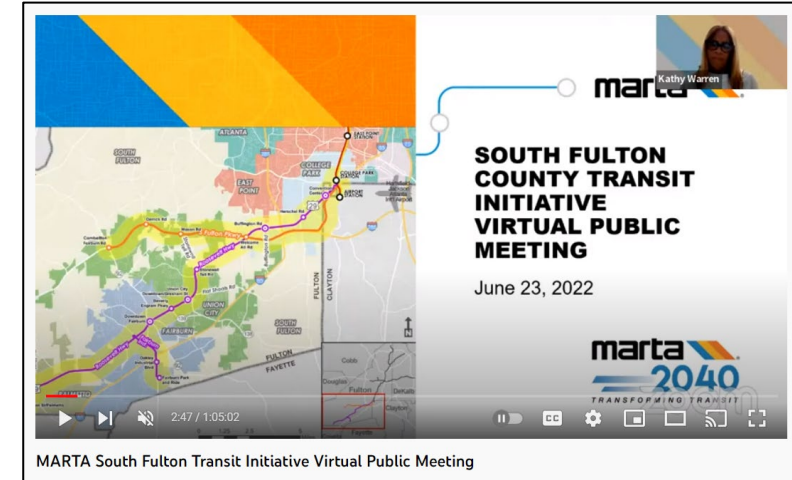
### Recap of Staff Activity

#### Completed Engagement Phase

- Mayors (May 10)
- Various City Councils (June/July)
- Stakeholder Agencies - Technical Staff (May 25)
- General Public (June 23) - **115 people in attendance**

- Engagement Follow Ups and Internal Design Exercises (August)

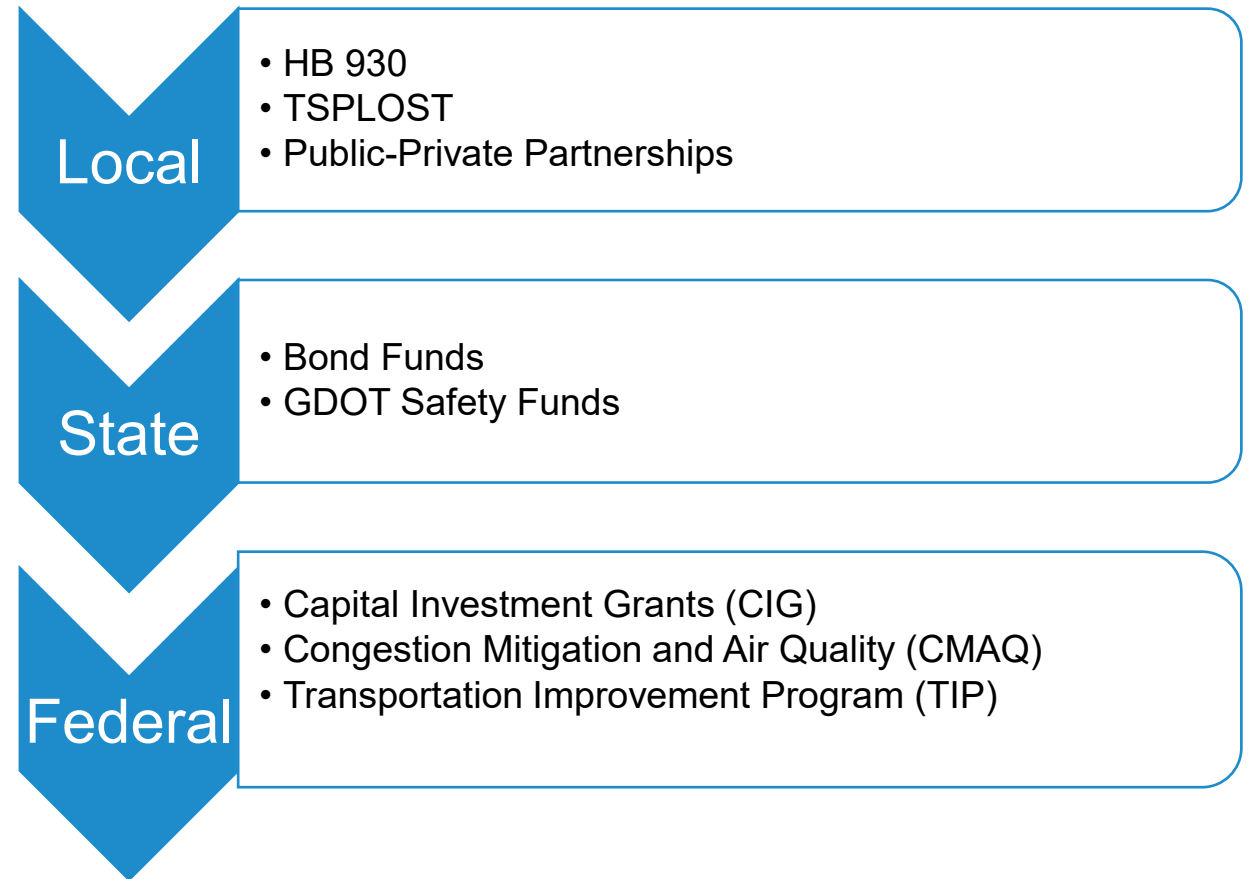
- ❑ Reassess the purpose of the project and the transit mode options
- ❑ Consider study area extension to include East Point (+2 mi) and Chattahoochee Hills (+10 mi)
- ❑ Identify measures to coordinate safety improvements along the corridors (with local jurisdictions and GDOT)





# Roosevelt Highway Funding Considerations

- Local funds can be leveraged to match a variety of state and federal funding sources.
  - Such as recently awarded funding opportunities with the ARC for corridor improvements (to include Roosevelt Hwy)
- State funds can be leveraged to match a variety of federal funding sources.





# Recap of Next Steps

## Assessment Phase

### Next Stage of Activities

#### Late 2022- Early 2023

#### Early-Mid 2023

#### Focus: Existing Conditions Analysis Addendum

- ❑ Complete analysis for the added portions of East Point and Chattahoochee Hills

#### Focus: Initial Transit Concepts and Scopes

- ❑ Develop mode and enhancement options
- ❑ Provide an engagement period for public feedback on alternatives/ options

#### Focus: Implementation Plan and Final Deliverables

- ❑ Finalize implementation plans for both corridors, ***to include evaluation of funding considerations***

Transition to Concept and Design phase



Thank You



# **Resolution Authorizing the Award of Contract for the Procurement of Structural Inspection Engineering Services, REI AE50149**



**Larry Prescott**  
AGM Design, Engineering & Infrastructure  
October 27, 2022

## SCOPE

The specific expertise during the proposed term of this contract may include, but are not limited to the following:

- Comprehensive inspection program
- Quality Control / Quality Assurance program oversight
- Performing destructive or non-destructive testing
- Structural condition assessments and rating recommendations
- Comprehensive data collection and management system with reports
- Performing other structural engineering consulting services as requested



## STATUS

In February 2022, the Planning & Capital Programs Committee was briefed on the plan to conduct a qualifications-based selection process to solicit firms to provide Structural Inspection Engineering Services.

On August 29, 2022, Qualification Statements were received from three Structural Engineering firms which the Source Evaluation Committee (SEC) members independently reviewed and scored.

On September 19, 2022, the SEC met to review the score ranking matrix prepared by Contracts & Procurement and, based on the decisive separation in scoring, **recommended for the award a single proponent.**

## Recommendation

- The SEC recommends the Approval of a Resolution authorizing the General Manager/CEO or his delegate to enter into a Contract for the Procurement of Design Services for REI AE50149, Structural Inspection Engineering Services with **Volkert-CERM**.



- The term of the contract will be three (3) base years with two (2) one-year options.
- Expenditures are estimated at \$600,000 per year for a total five (5) year value of \$3,000,000.
- The services will be funded by approved projects within the relative fiscal year Capital Improvement Program.
- The Office of Diversity and Inclusion assigned a 23% Disadvantaged Business Enterprise (DBE) goal on this procurement.

**Thank you!**





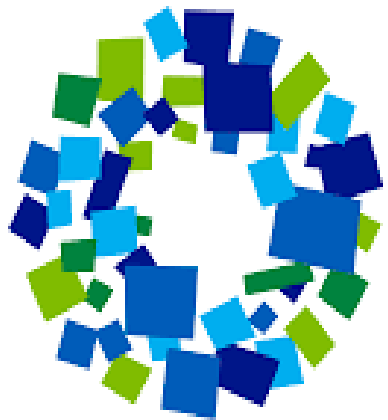


**Resolution Authorizing the Disposal of Non-Exclusive Permanent Easements to the Atlanta Development Authority d/b/a Invest Atlanta by and through its designated special agent, Atlanta BeltLine Inc, in the amount of \$198,500.00 for construction of Segment 4 of the Westside Trail, Fulton County, Atlanta GA**

**Planning & Capital Programs Committee**

*October 27, 2022*

**Robin Boyd**  
Director of Real Estate



**Atlanta  
BeltLine®**

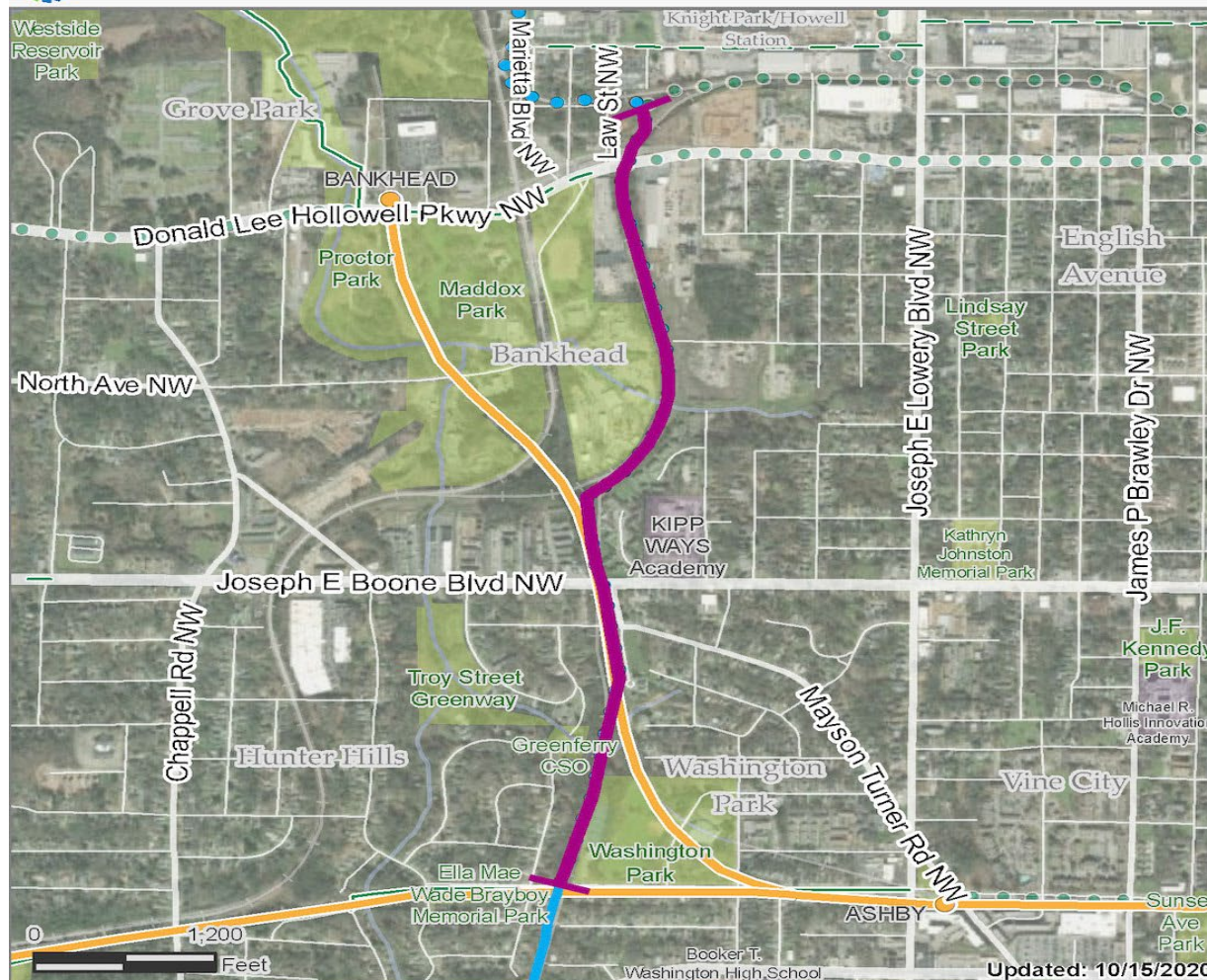
# Transaction Overview

<b>Purpose</b>	<p>Non-Exclusive Permanent Easements requested for Westside Trail Segment 4 construction at the following parcels:</p> <ol style="list-style-type: none"> <li>1. <u>BeltLine Parcels 3, 4 and 5 (Westmoor Drive):</u> <ul style="list-style-type: none"> <li>• Parcel 3: MARTA Acquisition Parcel P008, Tax Id 14 011500050438 = \$12,500.00</li> <li>• Parcel 4: MARTA Acquisition Parcel P009, Tax Id 14 011500050420 = \$ 4,700.00</li> <li>• Parcel 5: MARTA Acquisition Parcel P010, Tax Id 14 011500050412 = \$20,300.00</li> </ul> </li> <li>2. <u>BeltLine Parcels 8 and 10 (Ollie Circle):</u> <ul style="list-style-type: none"> <li>• Parcel 8: MARTA Acquisition Parcel P011, Tax Id 14 011500050172 = \$15,500.00</li> <li>• Parcel 10: MARTA Acquisition Parcel P011, Tax Id 14 011500050164 = \$14,500.00</li> </ul> </li> <li>3. <u>BeltLine Parcel 13 (1100 Mayson Turner Rd):</u> MARTA Acquisition Parcel P013, Tax Id 14 011500050016 = \$19,500.00</li> <li>4. <u>BeltLine Parcels 22 and 23 (1120 Joseph E Boone Blvd):</u> <ul style="list-style-type: none"> <li>• Parcel 22: MARTA Acquisition Parcel P220, Tax Id 14 011500030018 = \$28,800.00</li> <li>• Parcel 23: MARTA Acquisition Parcel P220, Tax Id 14 011500030018 = \$42,600.00</li> </ul> </li> <li>5. <u>BeltLine Parcel 26 (Joseph E Boone Blvd):</u> MARTA Acquisition Parcel P220, no Tax Id = \$40,100.00</li> </ol>
<b>Property</b>	<p>All Acquisition parcels are included in one MARTA Disposal Parcel C5019A – Tracts 1-9</p>
<b>Structure</b>	<p>Non-Exclusive Easement Agreements</p>
<b>Appraisal</b>	<p>\$198,500.00</p>
<b>Term</b>	<p>Permanent</p>
<b>Acquisition History</b>	<p>Acquisition Parcels P008/P009 May 1975, \$24,090; P010/P011 July 1975, \$29,718; P013 May 1976, \$1; P220 Nov 1990, \$3</p>
<b>FTA Interest</b>	<p>All Acquisition Parcels GA-03-0008 (79%)</p>

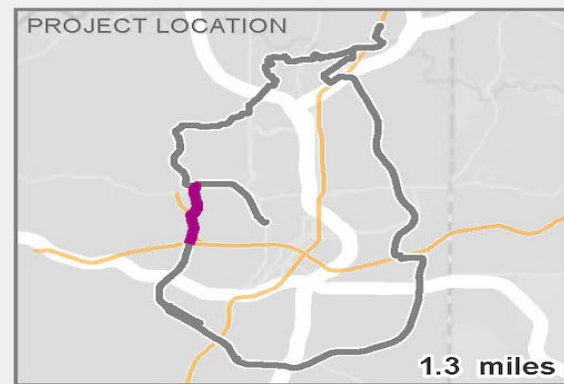
# Location ABI Parcels 3, 4, 5, 8, 10, 13, 22, 23, 26

## Proposed Easement Agreement – Segment 4

### Westside Trail – North Extension



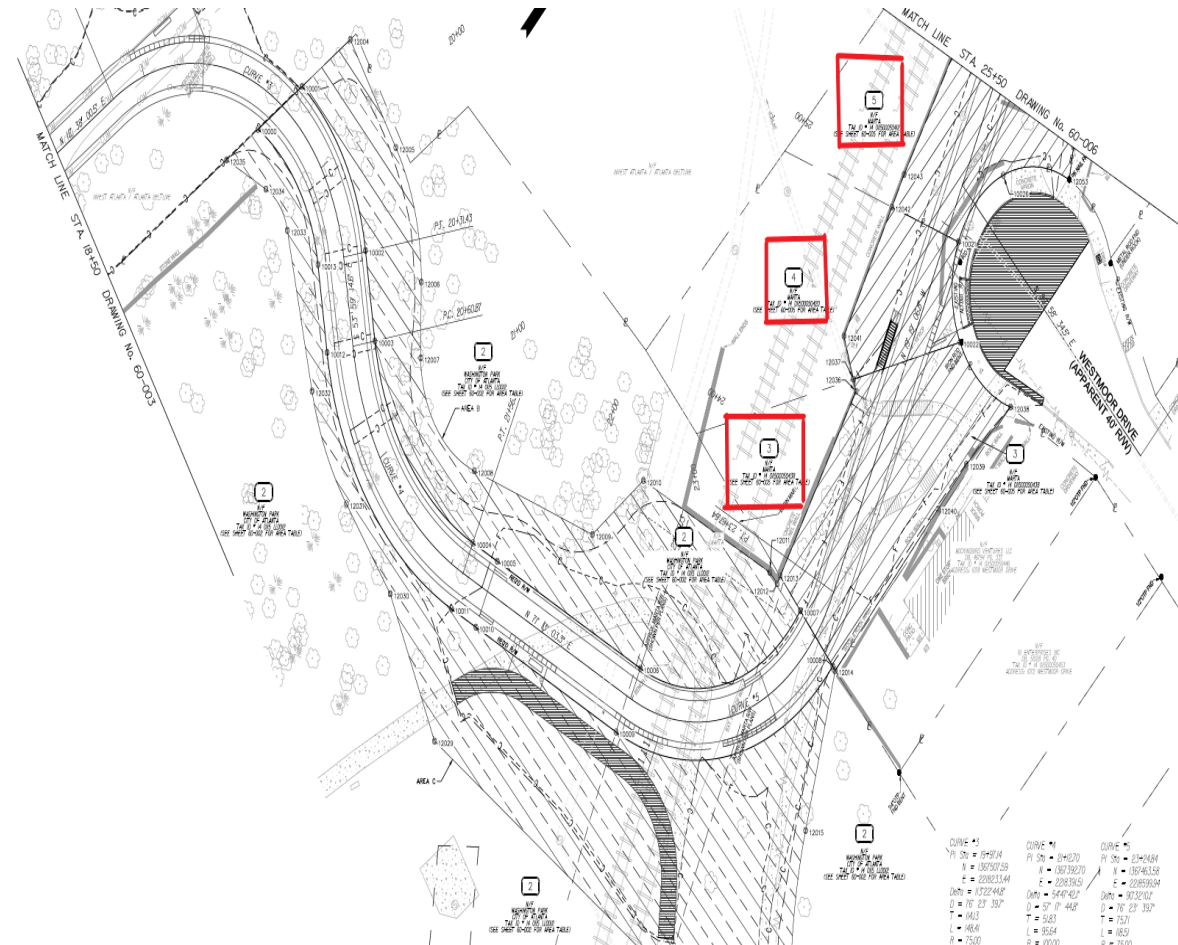
- Potential Access Point\*
  - | Project Extent - Main Line Trail
- Atlanta BeltLine Trails**
- Paved Trail
  - - - Interim Unpaved Trail
  - - - Under Construction
  - ● ● ● Future Trail
- Bicycle Facilities & Connector Trails**
- Protected Bike Lane, Cycle Track or Multi-Use Path
  - - - On-Street Bike Lane
  - ● ● ● Planned Bike Lane or Multi-Use Path
  - MARTA Rail System



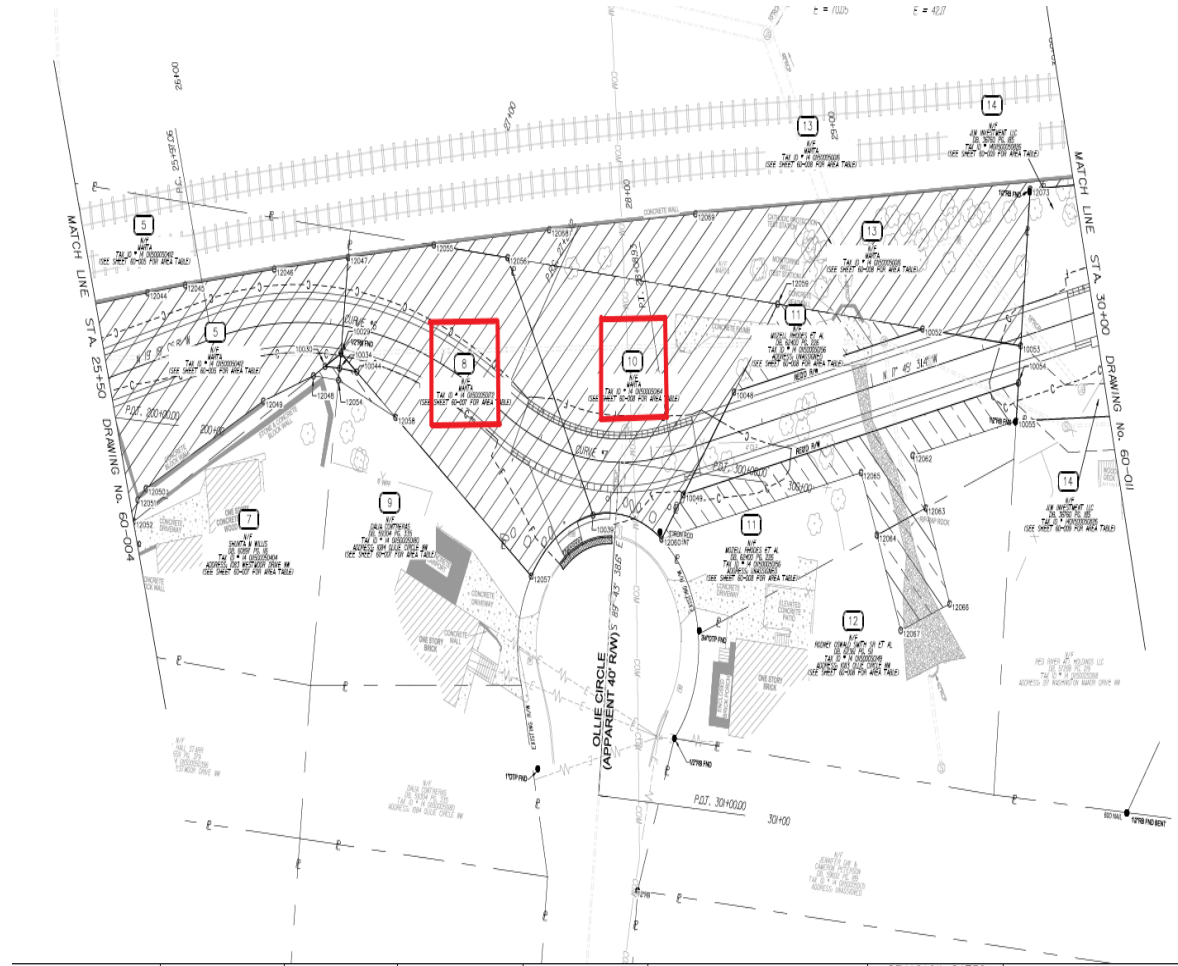
\* Note: For trail segments in early design phases, potential access points are not noted.

# Location ABI Parcels 3, 4, 5

## Proposed Easement Agreement – Westmoor Drive

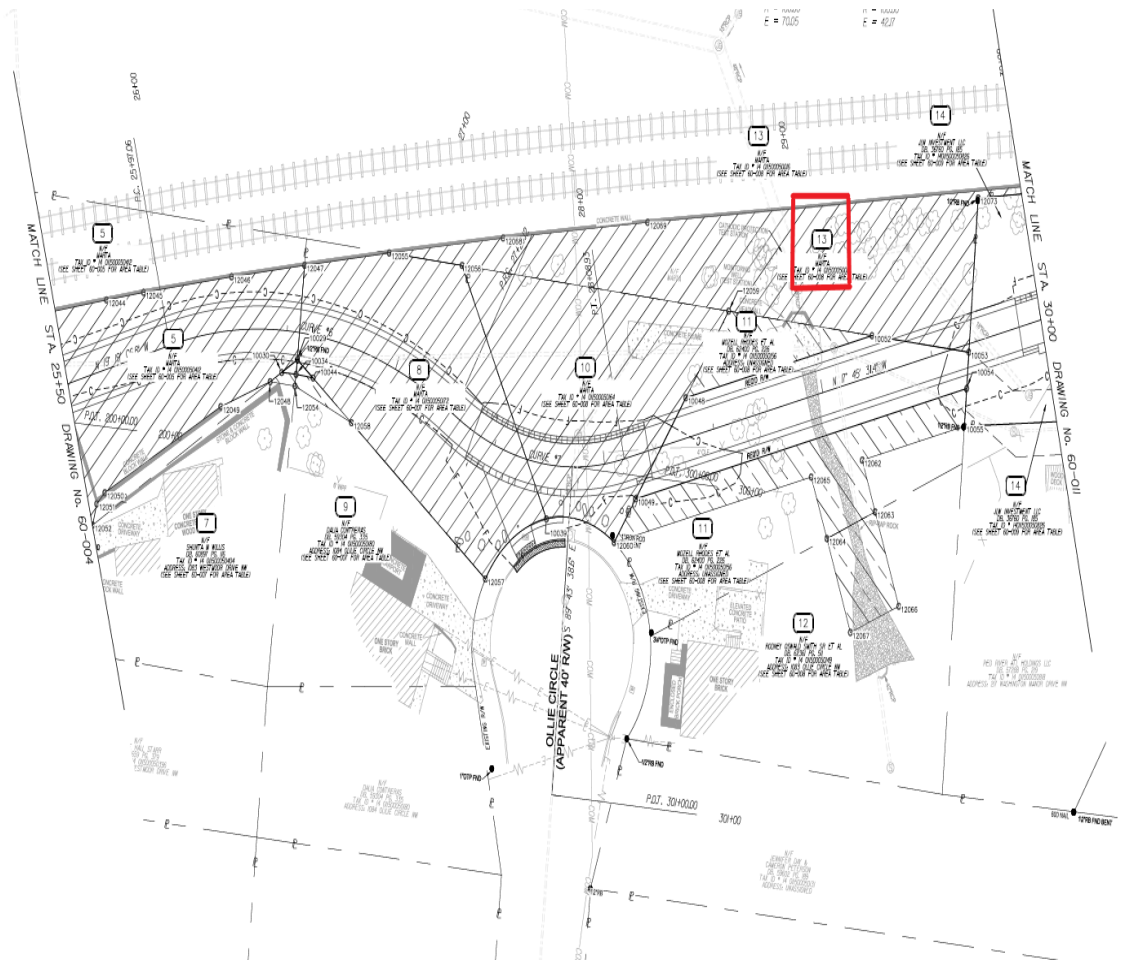
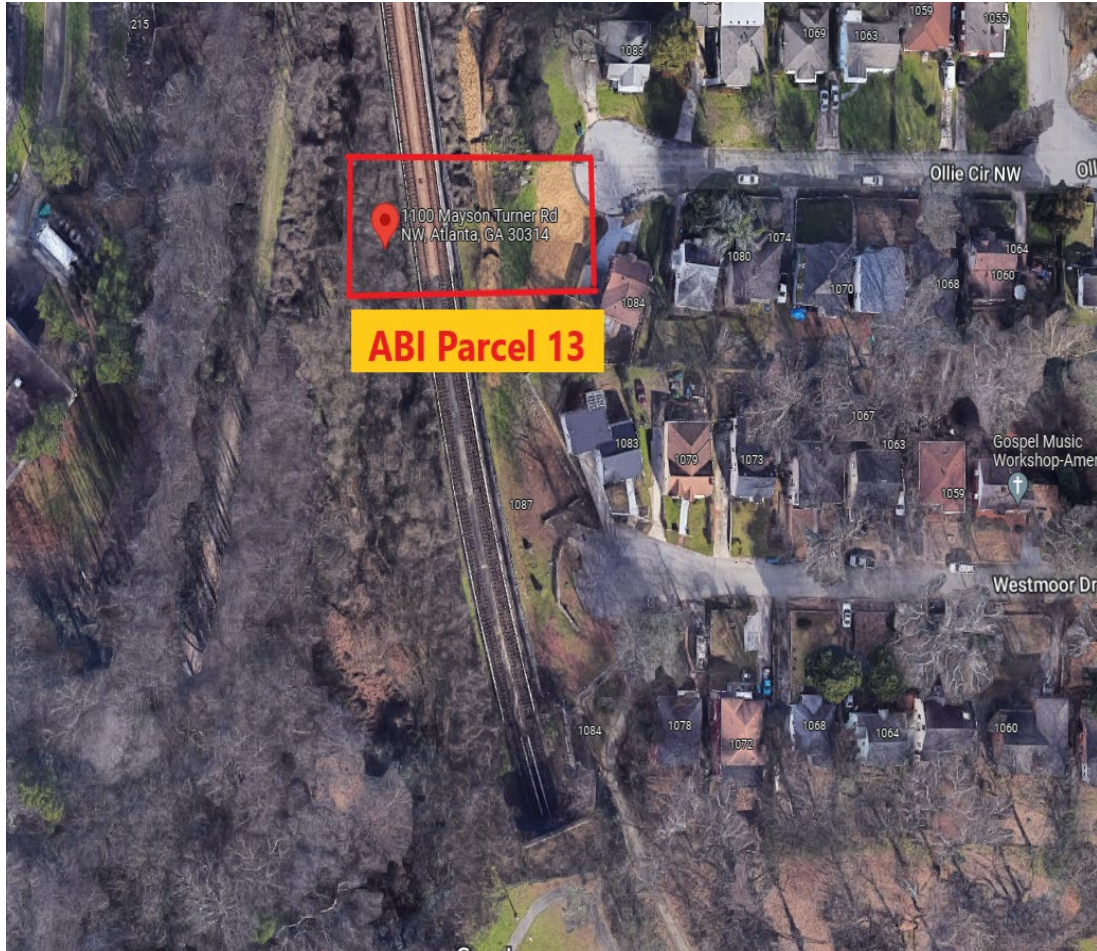


# Location ABI Parcels 8 & 10 Proposed Easement Agreement – Ollie Circle



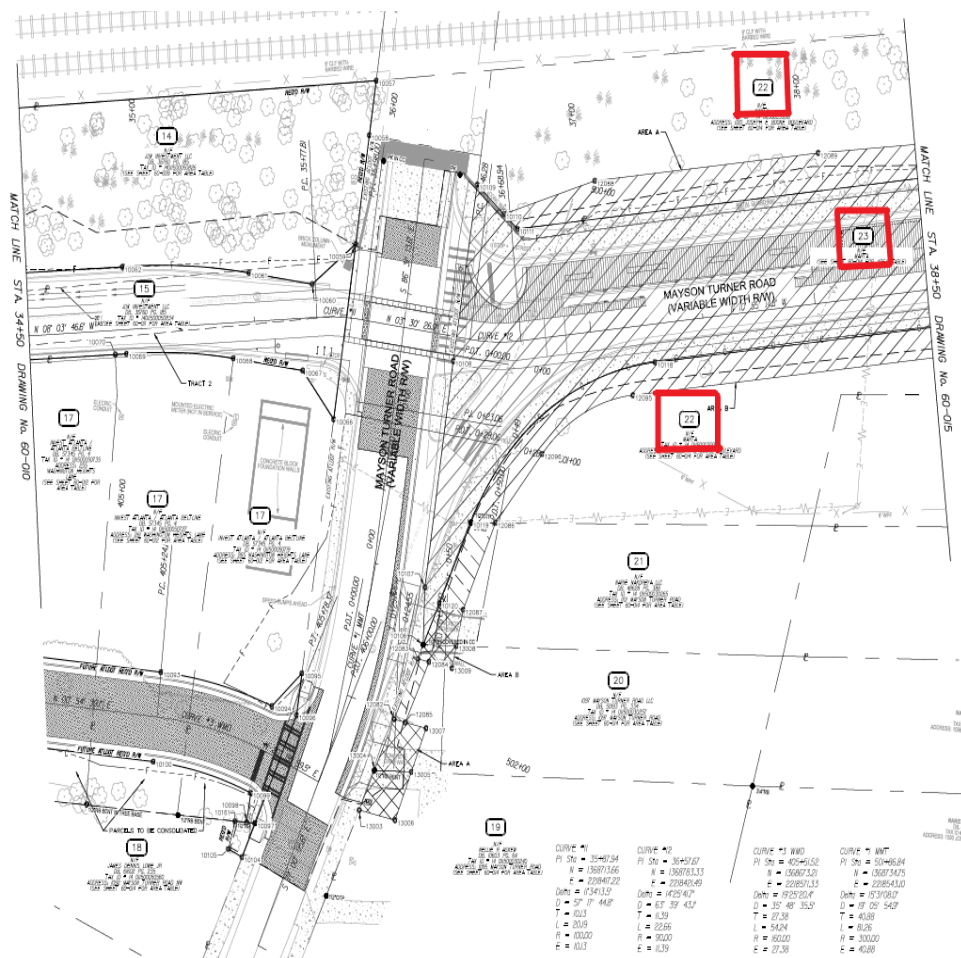
# Location ABI Parcel 13

## Proposed Easement Agreement – 1100 Mayson Turner



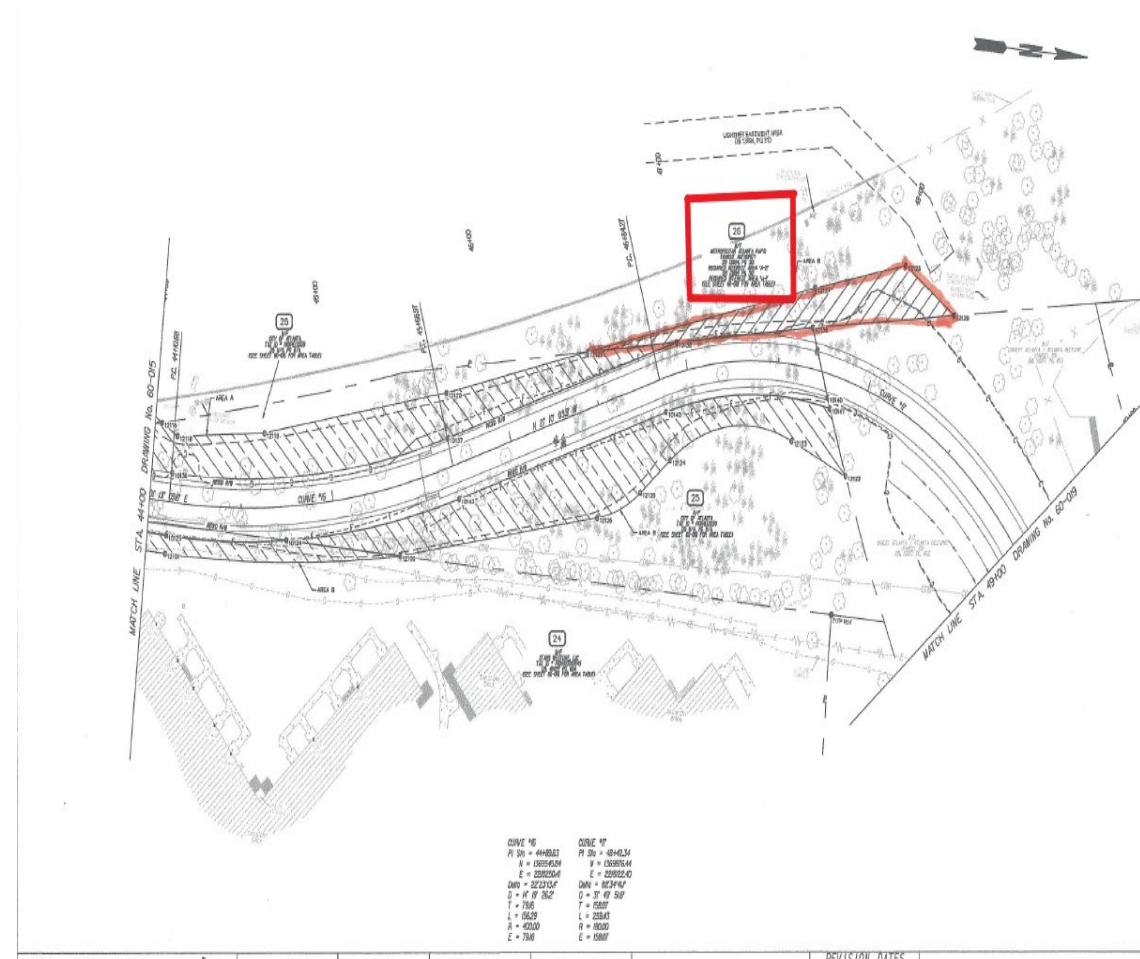
# Location ABI Parcels 22 & 23

## Proposed Easement Agreement – 1120 Jos E Boone Blvd



# Location ABI Parcel 26

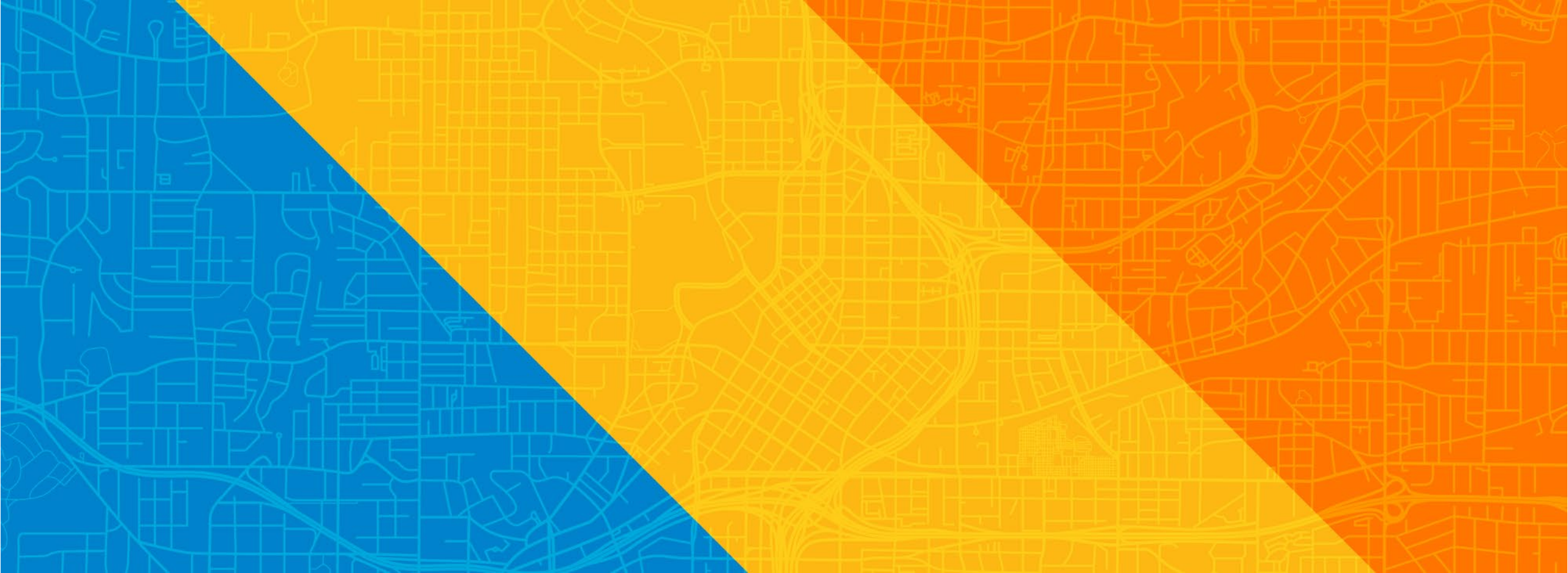
## Proposed Easement Agreement – Jos E Boone Blvd





## **Request Approval of the Board**

Resolution Authorizing the Disposal of Non-Exclusive Permanent Easements to the Atlanta Development Authority d/b/a Invest Atlanta by and through its designated special agent, Atlanta BeltLine Inc, in the amount of \$198,500.00 for construction of Segment 4 of the Westside Trail, Fulton County, Atlanta GA



Thank You

